

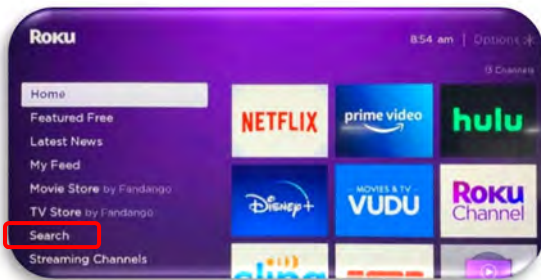
Asmark On Demand Instructions - Roku Device



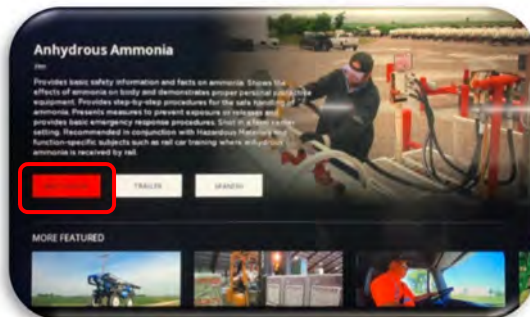
A Roku is one device that can be used to access *Asmark On Demand* for streaming training videos.

A Roku device plugs into a TV's HDMI port and delivers streaming content via the internet. They can be purchased at most major retailers such as Amazon, Walmart, Target, etc.

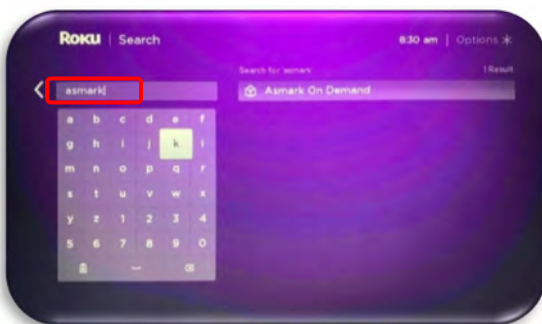
1. Power on your Roku device. Use the remote to toggle to 'Search' on the Menu.



5. Select 'Watch Now'.



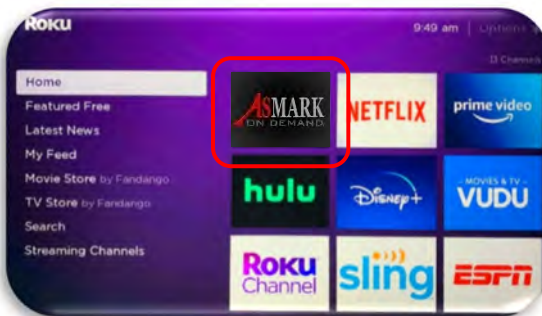
2. Search 'asmark' in the search box and select *Asmark On Demand* to add it to your Roku device.



6. Select 'Sign In'. You will be required to sign in the first time you watch a video.



3. From the Home screen, select the *Asmark On Demand* app.



7. Enter your asmark.org username and password and select 'Sign In'.



4. After the app loads, flip through and select a training video from the list.

Note: Any website user can log in to the streaming service.

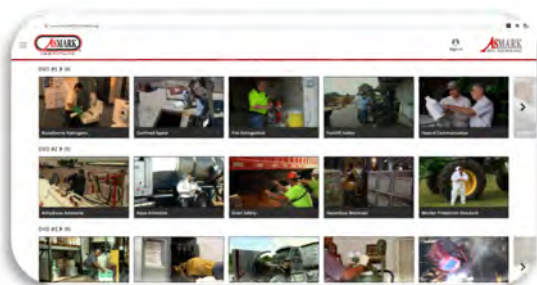
If you have questions or trouble at any time, please contact us at 270-926-4600 Ext 506.

Asmark On Demand Instructions - Website

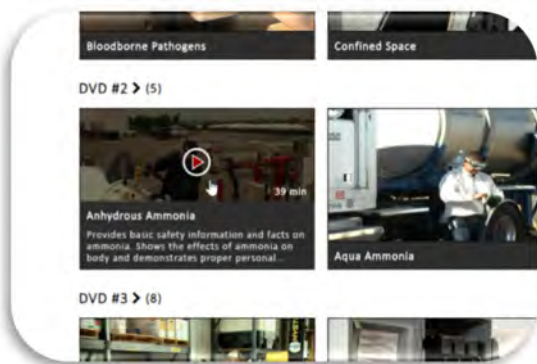


AsmarkOnDemand.org

1. Open a web browser and go to AsmarkOnDemand.org.



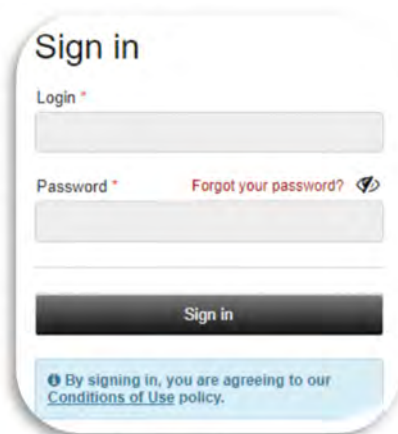
2. Select a training video from the list.



3. Select English, Spanish or Trailer.



4. Enter your asmark.org username and password and select 'Sign In'.



Note: Any website user can log in to the streaming service.

5. Once you are signed in, a video thumbnail will appear. Click the play button in the middle of the thumbnail to start the video.



If you have questions or trouble at any time, please contact us at 270-926-4600 Ext 506.